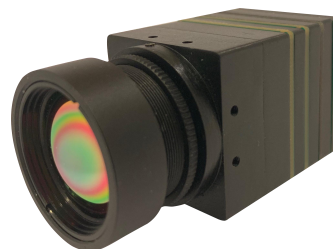


LWIR 640 Shutterless Camera Module



Technical Specifications

General
Model Number : CM-U600A09
System type : Uncooled LWIR Thermal Imager
Spectral band : 8~14 μm
NEDT < 50 mk
Lens : N/A
Resolution : 640 x 480 (Less than 9Hz)
Pixel pitch : 17 μm
Imagine processing digital zoom : x1, x2 , x4 , x8
Continues Temporal noise filtering : Yes
Image sharpening : Yes
Automatic Gain Control (AGC)
Bad pixel detection / Correction : list based ; automatic list based ; real-time
Active Contrast Enhancement
Storage ambient temperature : -55 ~ +95
Operating ambient temperature : -40 ~ +60
Interfaces
NTSC Analog Video output
PAL Analog Video output (Optional)
Digital Camera Link (Optional)
Control & Power Supply
Power Input : DC12V ; 4V~6V (Optional)
RS232
Camera Control Software
Language : English
Environment : windows 7 above (English)

Notes:

- 1.1 year warranty is only against all manufacturing and products defects. The warranty will be voided with any unauthorized service and disassemble on any camera modules.
- 2.Product specifications and design change without any further notice. For our latest product information, please contact our authorized sales agents or email us at sales@noweka.com .